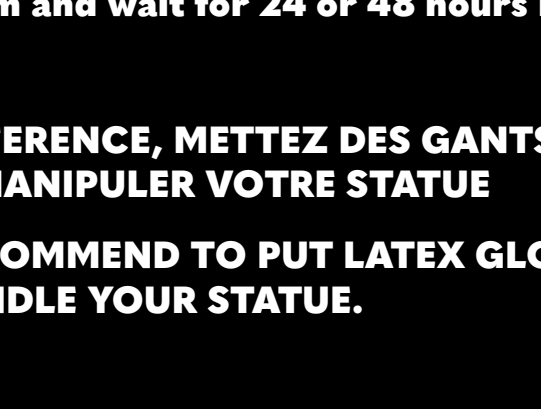




ACNOLOGIA IKIGAI

INSTRUCTIONS DE MONTAGE  
ASSEMBLY INSTRUCTIONS



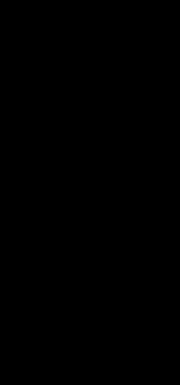
©Hiro Mashima, KODANSHA/ FAIRY TAIL Committee, TV TOKYO

#05



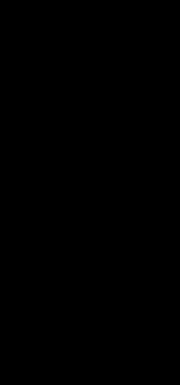
**NE MONTEZ PAS VOTRE STATUE DE COLLECTION IMMEDIATEMENT APRES L'AVOIR RECUE.**

Laissez le temps à la résine de se réchauffer à température ambiante, polyfoam ouvert, pendant 24 à 48 heures afin d'éviter tout risque de casse.



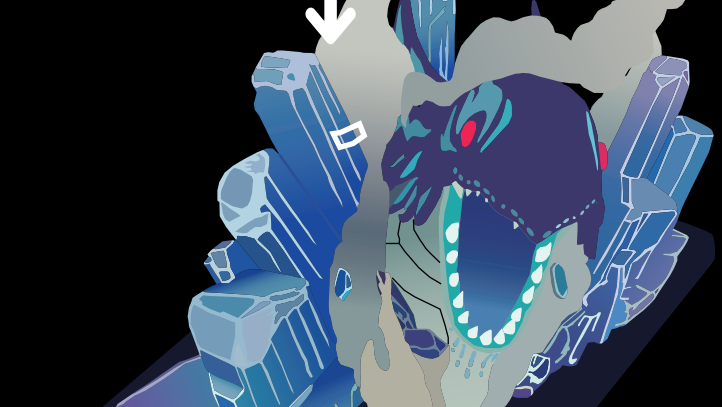
**PLEASE DO NOT ASSEMBLE YOUR STATUE RIGHT AFTER YOU HAVE RECEIVED IT**

The resin material needs time to warm up at room temperature to avoid risks of breaking, please open the polyfoam and wait for 24 or 48 hours before manipulation.



**DE PREFERENCE, METTEZ DES GANTS EN LATEX POUR MANIPULER VOTRE STATUE**

WE RECOMMEND TO PUT LATEX GLOVES ON TO HANDLE YOUR STATUE.



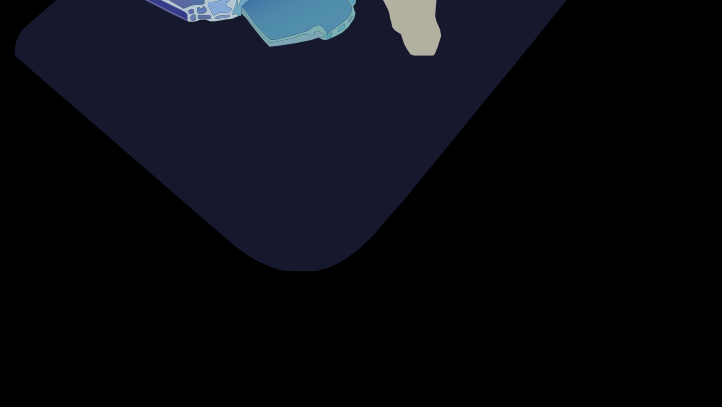
**01** Insérez le nuage sur la base.  
Insert the cloud into the base.



**02** Insérez le bas du corps sur la base.  
Insert the lower body into the base.



**03** Insérez la ceinture sur le corps.  
Insert the belt into the body.



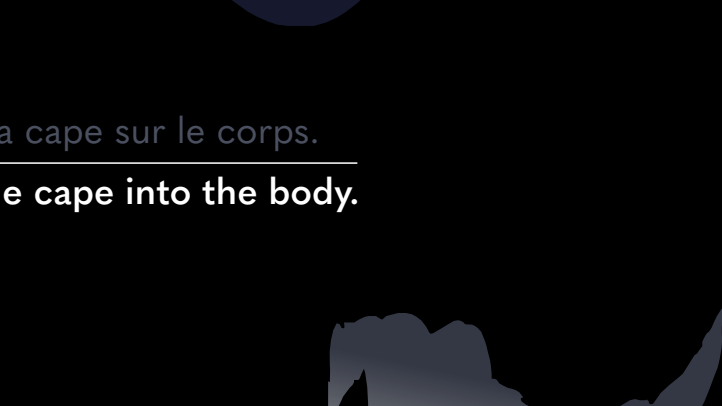
**04** Insérez la cape sur le corps.  
Insert the cape into the body.



**05** Insérez le col sur le corps.  
Insert the collar into the body.



**06** Insérez le col sur le corps.  
Insert the collar into the body.



**07** Insérez le col sur le corps.  
Insert the collar into the body.



**08** Insérez la tête sur le corps.  
Insert the head into the body.



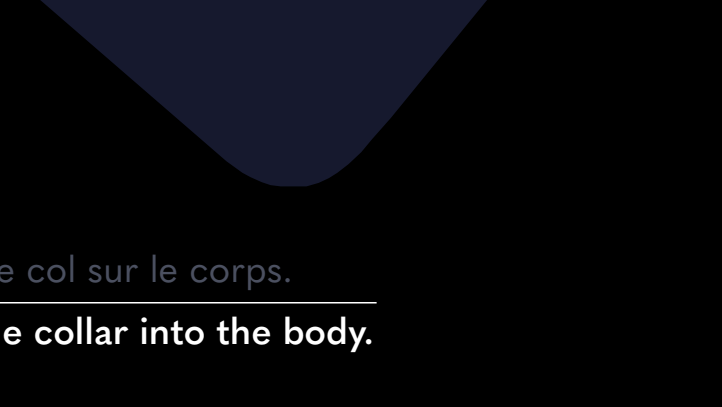
**09** Insérez le bras droit sur le corps.  
Insert the right hand into the body.



**10** Insérez l'éclair sur l'attaque et ses cheveux.  
Insert the thunder on the attack and his hair.



**11** Insérez l'éclair sur l'attaque et sa jambe.  
Insert the thunder on the attack and his leg.



**11** Votre statue est désormais complète.  
Your statue is now complete.

